



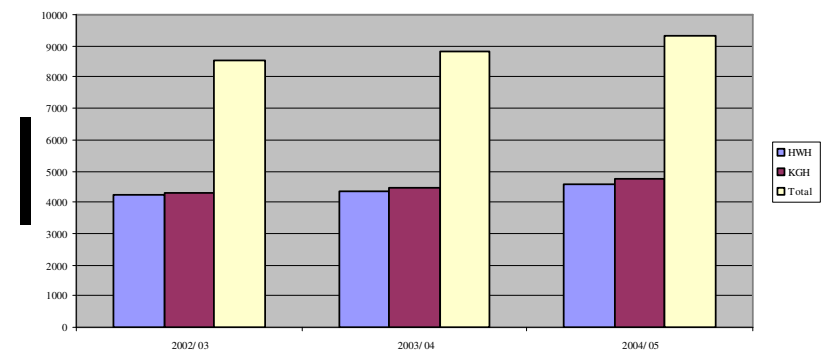
Developing maternity services

Gill Walton
Director of Midwifery

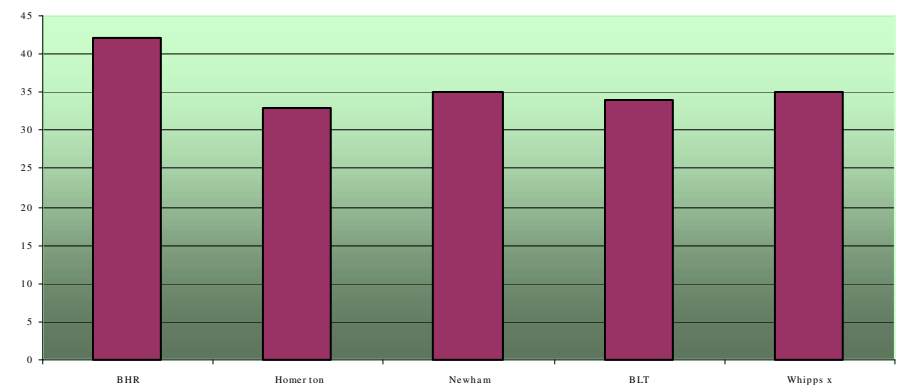
A snapshot of our service

- Current births over 9000 and rising
- Birth rate plus
-105 wte midwives short for workload up to Aug 2004
- Skill mix 90:10

Total births BHR



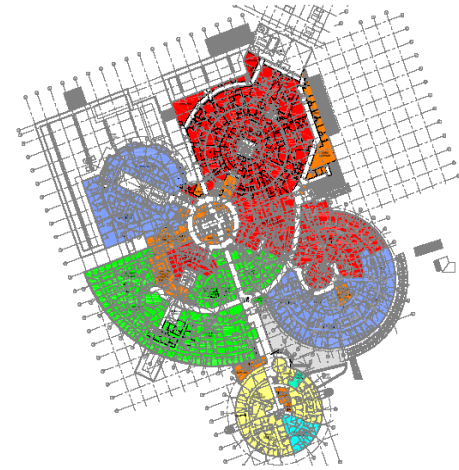
Average ratio of midwives to deliveries in NE London 2003/2004





Drivers for change

- Workload/workforce
- NSF
- New build
- National shortage of midwives
- A4C
- EWTD
- NICE guidance
- Clinical Governance
- Rising expectations

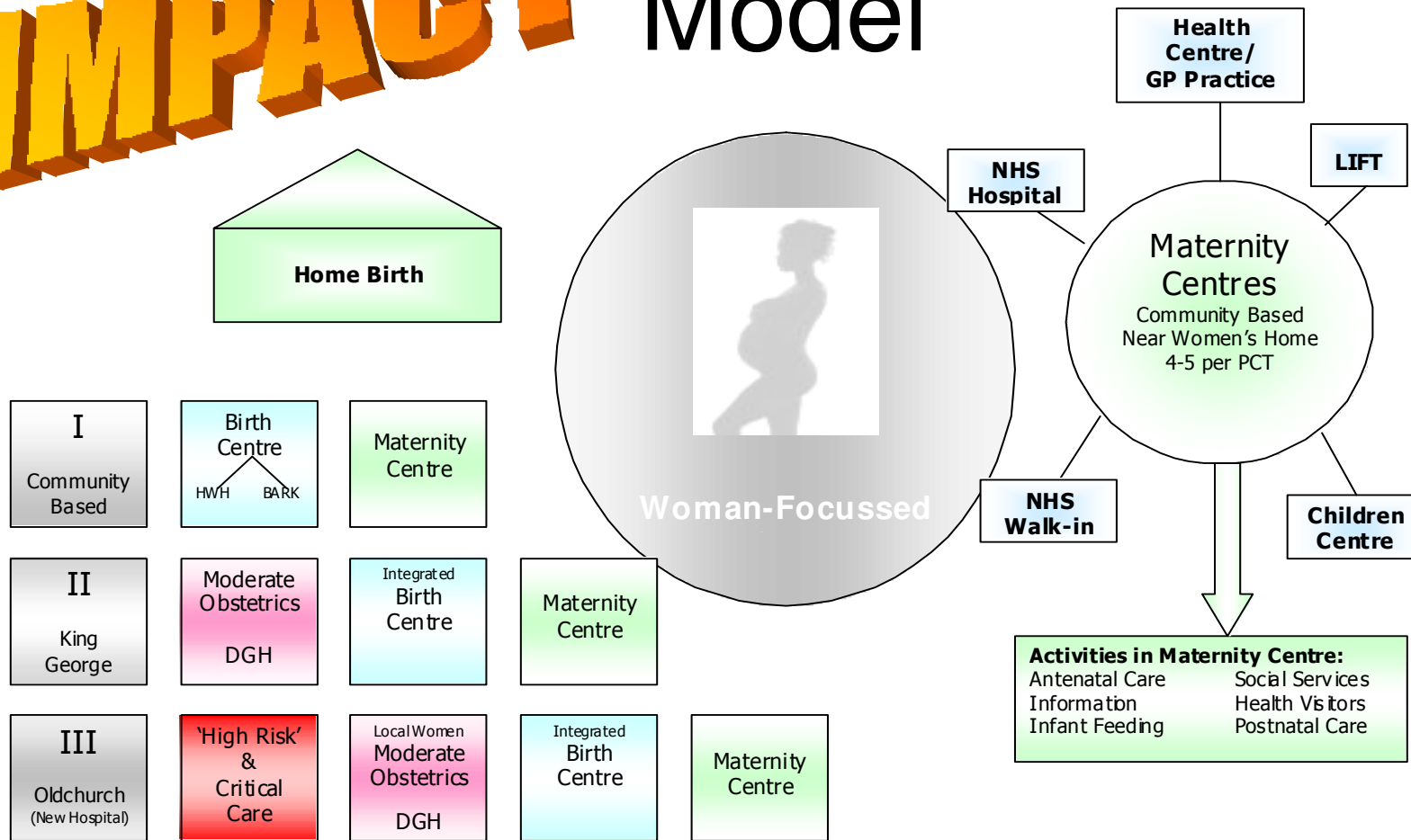




IMPACT!

- Deliver a safe service within agreed resources
- Develop a woman centred normalising philosophy of care
- Develop equality of access to maternity care
- Develop a high risk team
- Develop community focused midwifery led care in partnership with other health professionals
- Develop new roles and enhance existing support roles
- Develop appropriate multidisciplinary education and training
- Develop evidence based practice and information for women to support informed choice
- Underpinned by involving and communicating with women, families and stakeholders

IMPACT Model



Perinatal & Tertiary Centre



Delivering a safe service- priorities for 2005/06

- One to one care in labour
- Antenatal services
- Disadvantaged women and families



Vision



Women have easy access to supportive, high quality maternity services, designed around their individual needs and those of their babies (DH 2004)